

Deva II



ctp

R0

REGIONAL BENEFITS

Ideal Industrial Hub in Central Romania

Deva, a city located in the historical region of Transylvania, and its surroundings such as Baciu have become a hub for major automotive and other high tech manufacturing businesses in recent years, with ever more of these firms looking to 'nearshore' manufacturing to secure their supply chains closer to where their customers are located. This follows the COVID pandemic and geopolitical tensions disrupting supply chains, as well as new EU regulations that are encouraging manufacturers to base in the region. Central and Eastern Europe (CEE) has become a hotspot for multinational manufacturers looking to locate in Europe, with the availability of skilled labour, growing economies and good connections to Western European markets all being key factors drawing companies to the region.



A1 HIGHWAY
ACCESS 5 KM



3.5 KM GAS
STATION



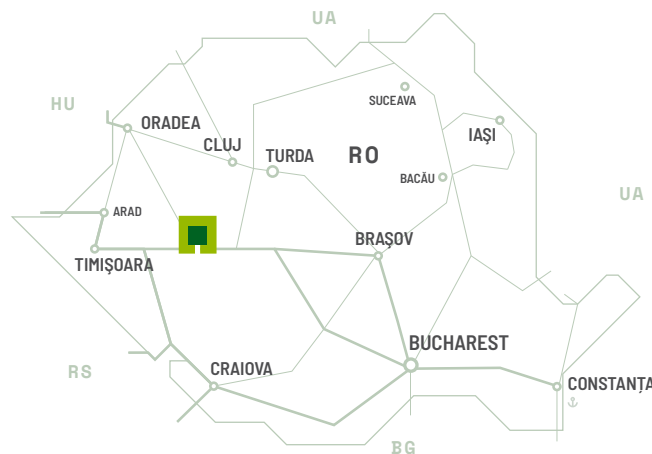
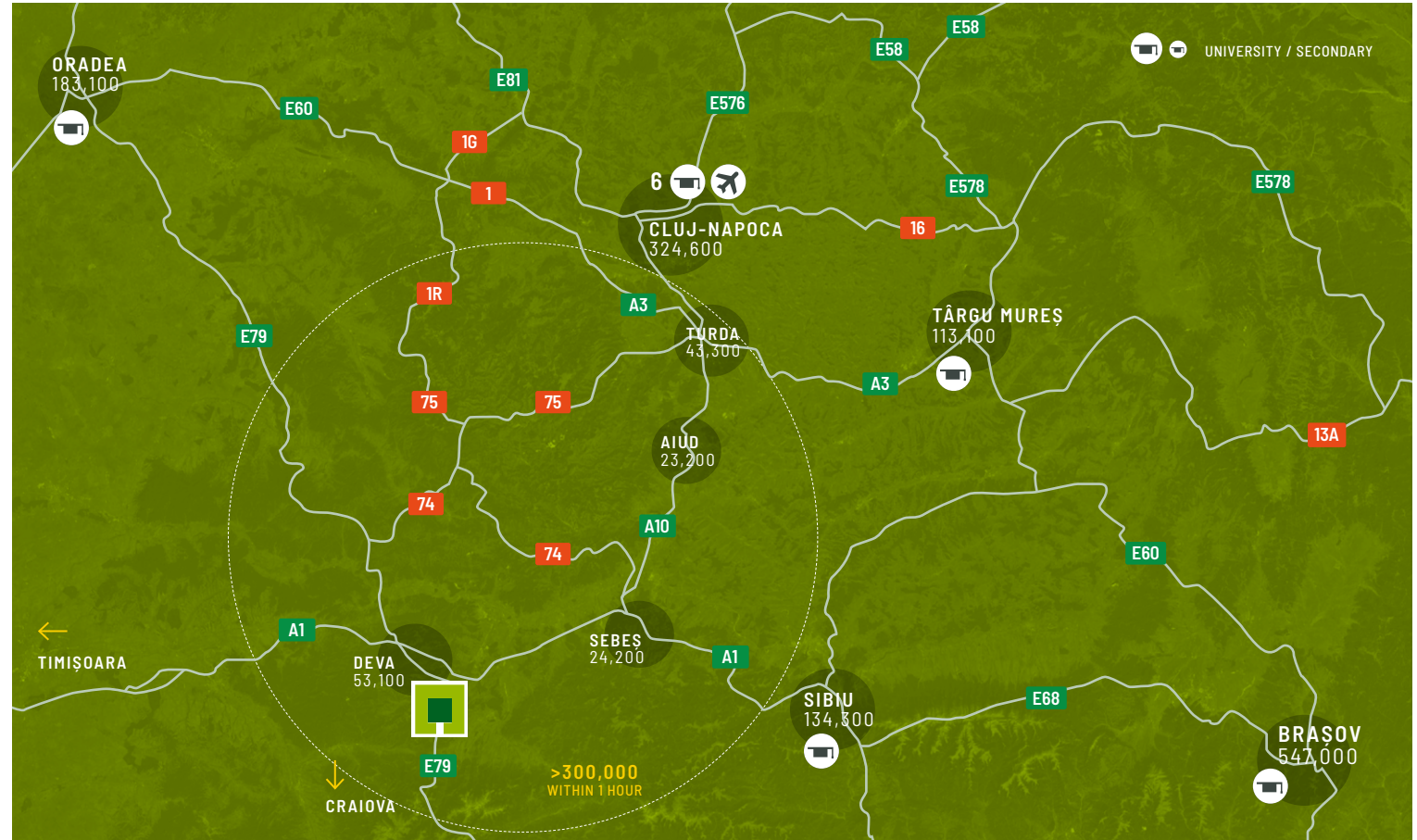
13 KM DEVA CITY
CENTER



HOTELS LESS THAN 2 KM

MAJOR CITIES

Sibiu	124 km	1h 19min
Turda	136 km	1h 30min
Timișoara	154 km	2h 00min
Cluj	169 km	2h 10min
Târgu Mureș	198 km	2h 05min
Brașov	264 km	3h 20min



LOCAL ACCESS

Perfect for distribution and manufacturing

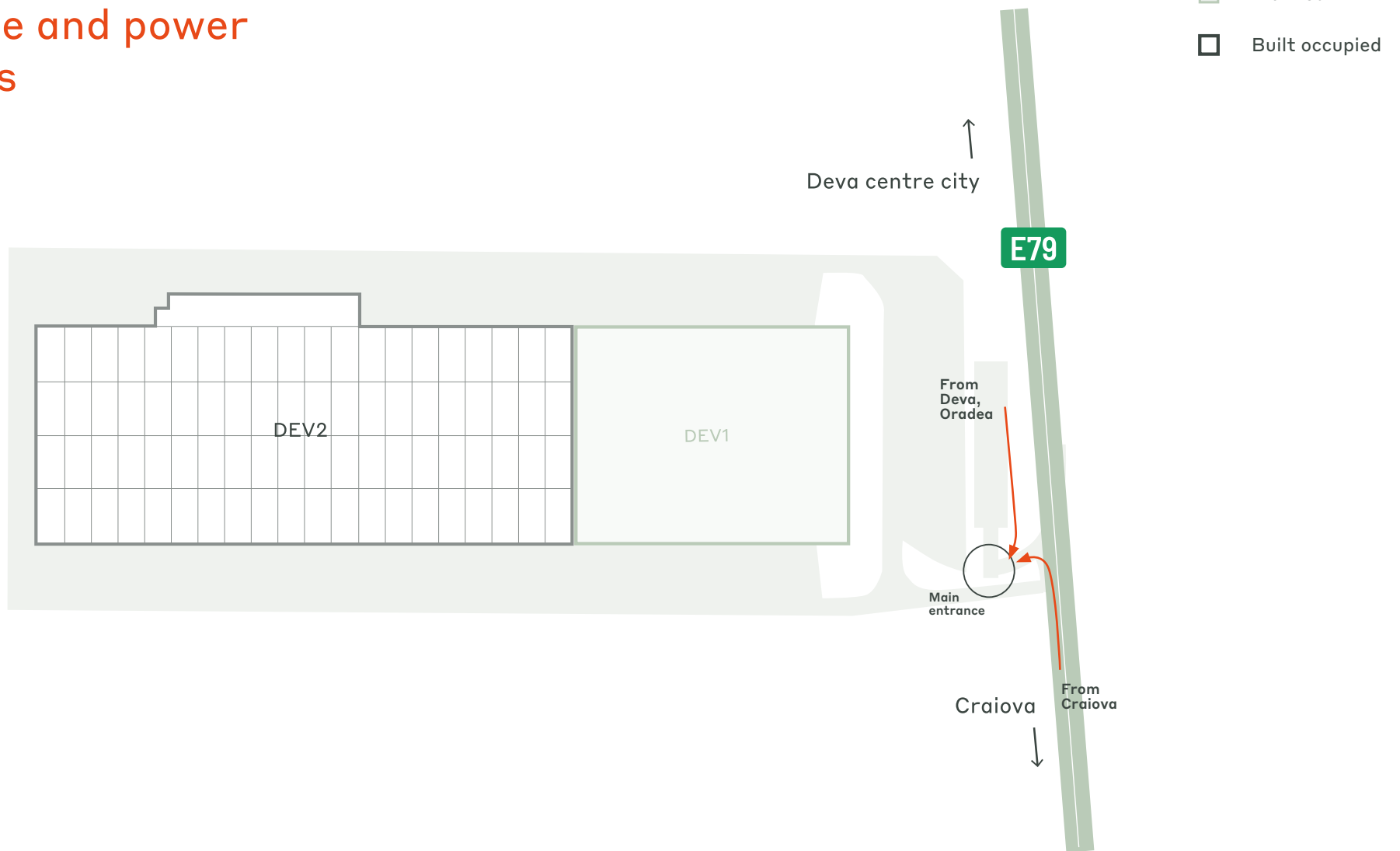
CTPark Deva is situated in the centre-west region of Romania, in a location favoured by international forwarders. Deva city is a hub for automotive, commerce and power industries. The park sits on the E79 highway, just a few kilometers from the main A1 motorway linking Bucharest with Arad and the Hungarian / Serbian borders.

PARK FEATURES

- ▶ Near Deva City, Home to the Transylvanian technical college
- ▶ Nearby A1 motorway linking Bucharest with western markets
- ▶ Region favoured by international forwarders
- ▶ Hub for automotive, commerce and power industries



Hub for automotive, commerce and power industries



AVAILABILITY & DELIVERY

DEV1	11,634 sqm	planned
------	------------	---------

KEY PARK DATA

CTPark Deva II

AVAILABLE NOW

0 sqm

DEVELOPMENT OPPORTUNITY

13,248 sqm

BUILT-UP AREA

25,774 sqm

TOTAL AREA

8.54 ha

PARK & NEARBY INVESTORS

Yusen Logistics

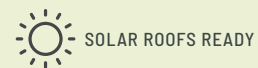
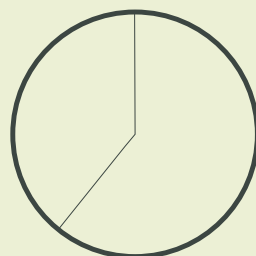
KSHG

Havi Logistics

INDUSTRIES IN THE PARK

61% Automotive

39% 3PL



SOLAR ROOFS READY



WATER
RECYCLING



LANDSCAPED
AREAS



ELECTRIC
CHARGERS PLANNED



RESTAURANT
LESS THAN 2 KM



HOTEL
LESS THAN 2 KM



CTPARK Network

WHERE YOU NEED TO BE

10 countries

TRACK RECORD OF SUCCESS

11.2 million sqm
GLA

SPACE FOR YOU TO GROW

20.7 million sqm
landbank

LONG-TERM PARTNER

>1,000 clients

ctp



Aurel Cistea
Business Development
Manager Transylvania,
Romania

+40 799 881 188
aurel.cirstea@ctp.eu
ctp.eu

